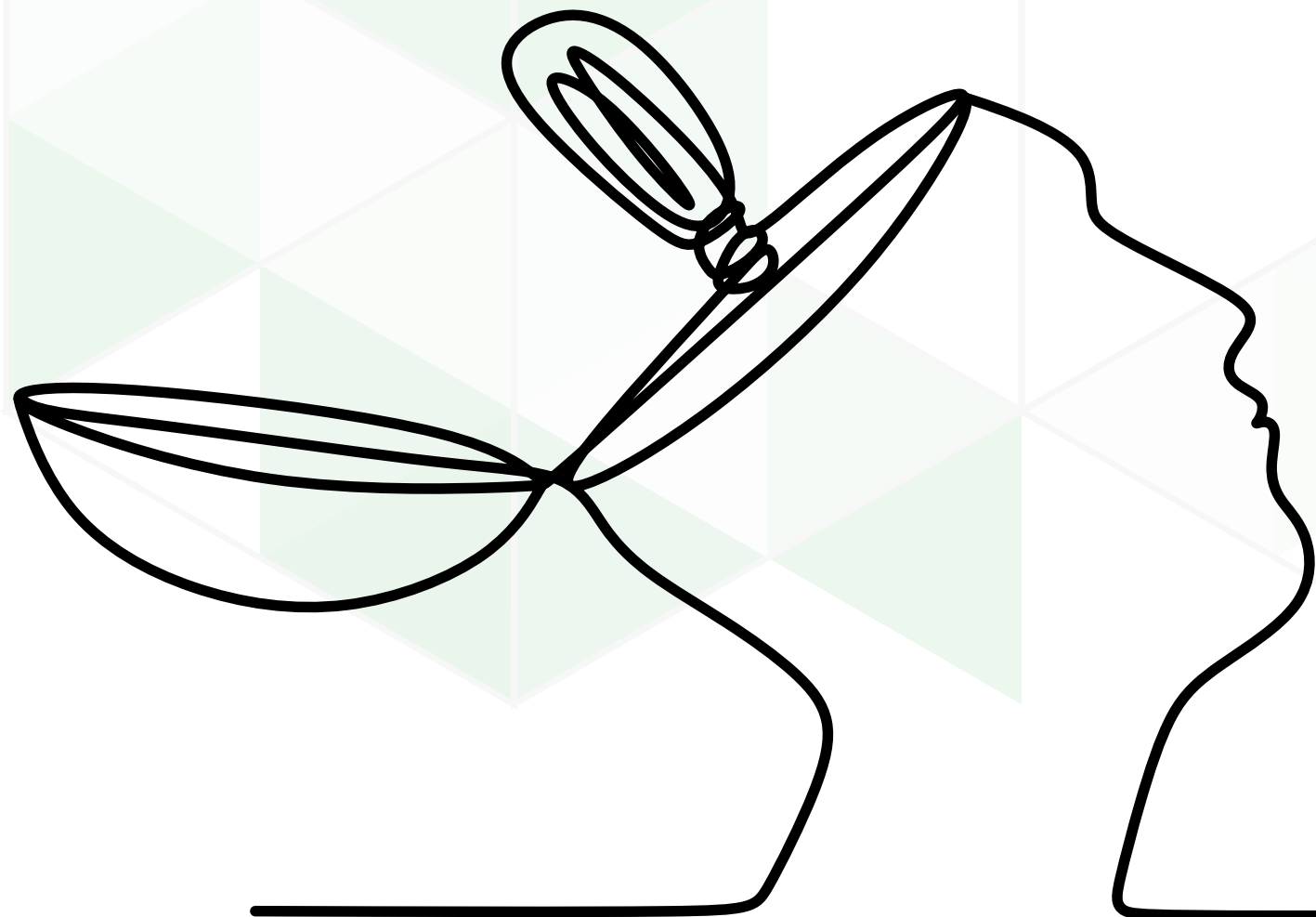


SKALENT®

Road Maps of Success

SKALENT CONSULTANCY SERVICES PVT LTD.



ABOUT US

Headquartered in Pune, Skalent INDIA is a Multiple Award Winning, '**Innovation Driven**' learning and development organization that focuses on **enhancing business value** today, while **building strategic resilience** for tomorrow by developing high-value **sustenance-based learnings**.

With a strong balance of internal and empanelled experts, our services are offered and delivered globally with a targeted outcome of '**Continuous Learning**' & '**Sustenance**' and with customised content that is **current, accessible, and easily understandable**.

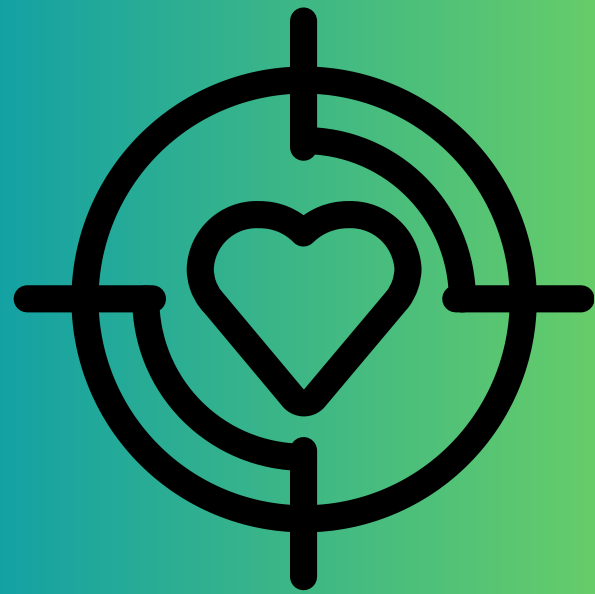
CORE VALUES



SKALENT®

Road Maps of Success

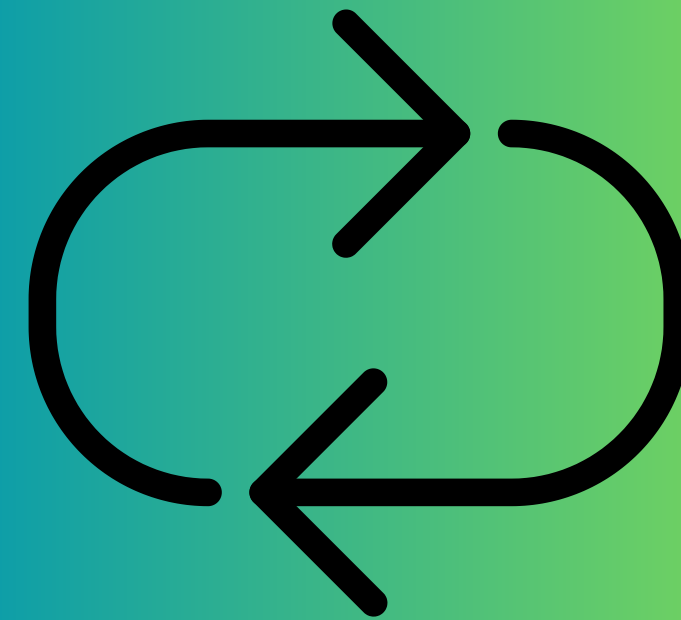
Our organisation's CORE VALUES define our workplace culture and purpose



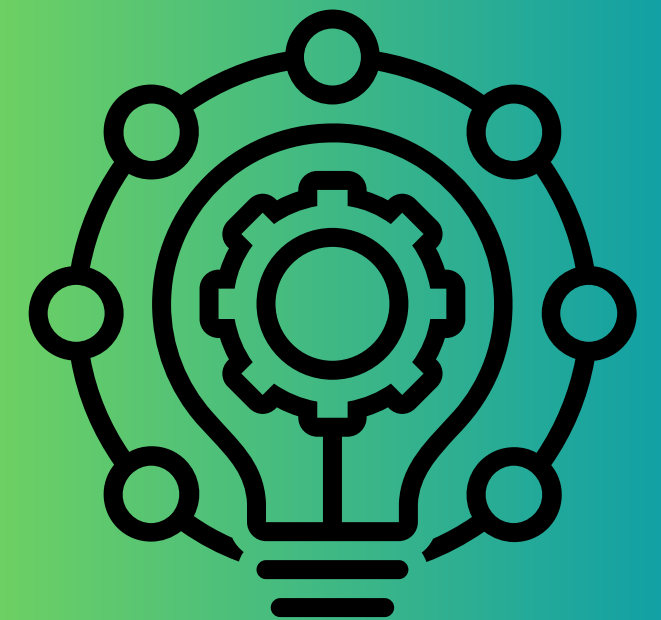
**RELATIONSHIPS
FOR LIFE**



**COLLABORATIVE
CONSULTATION**



**CONTINUOUS
LEARNING**



**MEANINGFUL
INNOVATIONS**

OUR JOURNEY

150+ CLIENTS

04+ COUNTRIES | **50+** UNIQUE CUSTOMIZED WORKSHOPS

20,000+ TRAINING HOURS | **5000+** COACHING HOURS

10+ CULTURE INTERVENTIONS

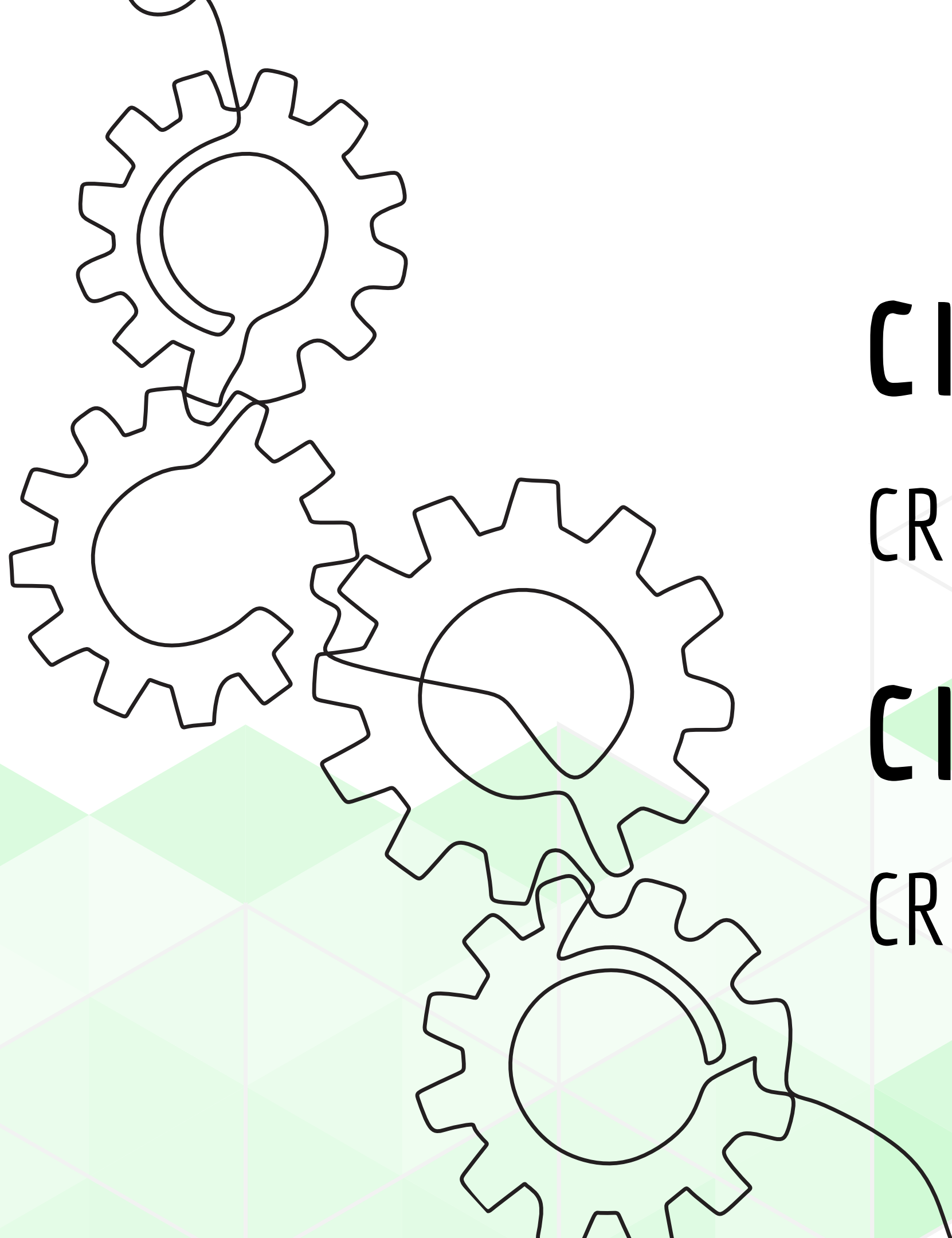
OUR OFFERINGS

CIO

CREATING INSPIRING ORGANIZATIONS

CIE

CREATING INSPIRING ENTREPRENEURS



CIO OFFERINGS

CREATING INSPIRING ORGANIZATIONS



Behavioral Skill Development
Functional Skill Development

Leadership Development

Executive & Business Coaching

Organizational Development

MTa learning Arenas

Lumina Learning - Assessment Suite
Individual and 360 Degree

B. O. T. S.
Business. Outbounds. Training. Success



Behavioural Skills

- L-A-B-Language and Business
- Business Communication
- High Impact Presentation Skills
- G-E-M Grooming Etiquettes & Mannerisms
- Personal Effectiveness
- Personal Branding
- Camp'US' to Corporate
- Customer Centricity
- Holistic Decision Making
- Managing Conflicts
- Feedback to Feedforward
- Stress Management and Emotional Wellbeing
- Planning and Prioritising
- Influencing Skills
- Selling Skills

Functional Skills

- Design Thinking
- Creativity & Innovation
- Negotiation Skills
- Value Based Selling
- Key Account Management
- Territory and Distribution Management
- Problem Solving and Analytical Skills
- Train The Trainer
- Interviewing Skills
- Nine-Box Model
- Finance for Non-Finance
- Financial Modeling
- POSH
- Agile - SCRUM Framework
- Project Management Program
- MS Office & POWER BI
- Storyboarding with Data

Leadership Development

- First Time Managerial Development Program (FTM)
- Young Leadership Development Program (YLP)
- Accelerated Leadership Development Program (ALP)
- Executive Leadership Development Program (ELP)
- Women Leadership Development Program (WLDP)
- Mentoring Skills
- Coach the Coach
- Leaders as Change Champions
- Mastering Business Storytelling
- Influencing Without Authority

Executive & Business Coaching

- Executive Coaching
- Business Coaching
- Leadership Coaching
- Group Coaching

Organisational Development

- Assessment Centre
- Development Centre
- Competency Identification, Writing and Mapping
- HR Consulting
- Culture Sensitivity in Corporates
- Change Management
- Vision, Mission and Values
- Diversity, Equity, Inclusion & Belonging
- Strategic KPI Alignment
- Integrated Business Planning

Skalent INDIA x MTa

www.mtlearning.com

- Team Work
- Problem-Solving
- Communication
- Business Priorities
- Performing for Excellence
- Leadership Development

Skalent INDIA x LUMINA

www.luminalearning.com

- Lumina Spark
- Lumina 360
- Lumina Select
- Lumina Sales
- Lumina Leader
- Lumina Team

B.O.T.S

Business Outbounds Trainings Success

- Team Building and Collaboration offsite
- Strategic Leadership offsite
- Large Team offsite
- Game-based learning and simulations
- Theater-based learning and Drum Circle
- Emotional and Mental Wellbeing
- Virtual Team Building and Collaboration

CIE OFFERINGS

CREATING INSPIRING ENTREPRENEURS



Diagnostics



Participation Strategy



Competitive Strategy



Organizational Development



Diagnostics

- Defining the Change Statement
- Organisation SWOT
- TOWS Matrix
- Vision Mission Values - Definition & Upgrade
- HR Consulting
- Strategic KPI
- Strategy Alignment

Participation Strategy

- Strategic Pillar Creation
- Market Analysis
- Market Segmentation
- Customer Analysis
- Winnability Matrix

Competitive Strategy

- Sales Analysis
- Value-Based Selling
- Market Analysis
- Sales Strategy Creation
- GO-TO Market Strategy Creation

Organizational Development

- Behavioral Skills Development
- Functional Skills Development
- Leadership Development
- Succession Planning
- HR Consulting
- Coaching
- Mentoring

OUR PARTNERSHIPS



Road Maps of Success



www.mtlearning.com

With the dynamic business landscape we navigate, Continuous Learning and Meaningful Innovation holds a high value! It is with this belief, we have strategically partnered with **MTa Learning**, a seasoned leader in experiential learning with over 35 years of global experience in 100+ countries and thousands of the world's most demanding organizations.

Skalent INDIA's core competence of customization bundled with **MTa's** proven methodology of knowledge transfer and sustenance creates a learning arena and integrates -

- knowledge**—the concepts, facts, and information acquired through formal learning and past experience;
- activity**—the application of knowledge to a “real world” setting; and
- reflection**—the analysis and synthesis of knowledge and activity to create new knowledge”.

With a wide range of applications, Skalent x MTa association provides -

Team Work

- Building on Ideas
- Expression
- Listening
- Probing
- Respect
- Progress Review
- Communication
- Constructive Criticism
- Planning & Prioritisation
- Quality Standards
- Team Decision making
- Collaboration for Success

Problem Solving

- Problem - Identification, Analysis & Resolution
- Conceptualization & Critique
- Focus & Goal Clarity
- Success Orientation
- Collaborative Success

Communication

- Listening Skills
- Probing Techniques
- Empathy
- Explanation & Instruction
- Quality Consciousness
- Expression Management
- Eliminating Ambiguity
- Social Awareness

Business Priorities

- Business Acumen
- Customer Focus
- Optimization
- Prioritization
- Problem Analysis
- Probing
- Selling Skills
- Thinking Ahead

Performing for Excellence

- Leadership
- Negotiation Skills
- Commitment
- Personal Effectiveness
- Personal Leadership
- Ethics & Honesty
- Strategic Awareness

Leadership Development

- Gaining Commitment
- Create Clarity
- Goal and Target Setting
- Performance Enhancement
- Self/Professional Leadership
- Providing Direction
- Leading across Locations
- Big Picture Thinking
- Leading Teams and Leaders
- Delegation
- Planning and Prioritization
- Project Management
- Problem Solving
- Decision Making
- Innovative Mindset
- Creative Thinking

MTA OFFERINGS

OUR PARTNERSHIPS



SKALENT®

Road Maps of Success

Skalent INDIA has partnered with **Lumina Learning** who has designed cutting-edge products based on an integrated suite of digital **psychometric** resources, qualifying and supporting a global community specializing in organizational and individual transformation since 2009. **Skalent INDIA x LUMINA Learning** believes that meaningful personal growth helps people become more adaptable and build strong personal and workplace relationships.



www.luminalearning.com

Lumina Learning products are pioneers of innovative psychometrics used in over 40+ countries, in 30+ languages. With humanistic selection and development solutions that accelerate emotional, rational, and leadership development, Lumina helps enable your success in the marketplace

With a wide range of applications, Skalent x Lumina Learning association provides -

Lumina Spark

- Group and Individual Coaching
- High Potential Identification
- Talent Mapping
- Customised Leadership Trainings

Lumina Select

- Critical Hiring
- Internal Selection
- Hi-potential Identification
- Talent Mapping
- Competency Framework
- Assessment Centres
- Performance Coaching
- Manager Training

Lumina Team

- Team Coaching
- Team Norms
- Assessment Centres
- Bespoke Leadership Trainings

Lumina Emotion

- Executive Coaching
- Personal Counselling
- Emotional Intelligence based Trainings

Lumina Leader

- Executive Coaching
- Personal Counselling
- Competency Framework
- Assessment Centres
- Bespoke Leadership Training

Lumina Sales

- Sales Coaching
- Sales Leader Training
- Sales Talent Mapping
- Hi-potential Identification
- Team Assessment
- Development Centres

Evaluation & Role Change

- Lumina Spark
- Lumina Select

Onboarding

- Lumina Spark
- Lumina Select

Recruitment

- Lumina Team
- Lumina Select

Training & Development

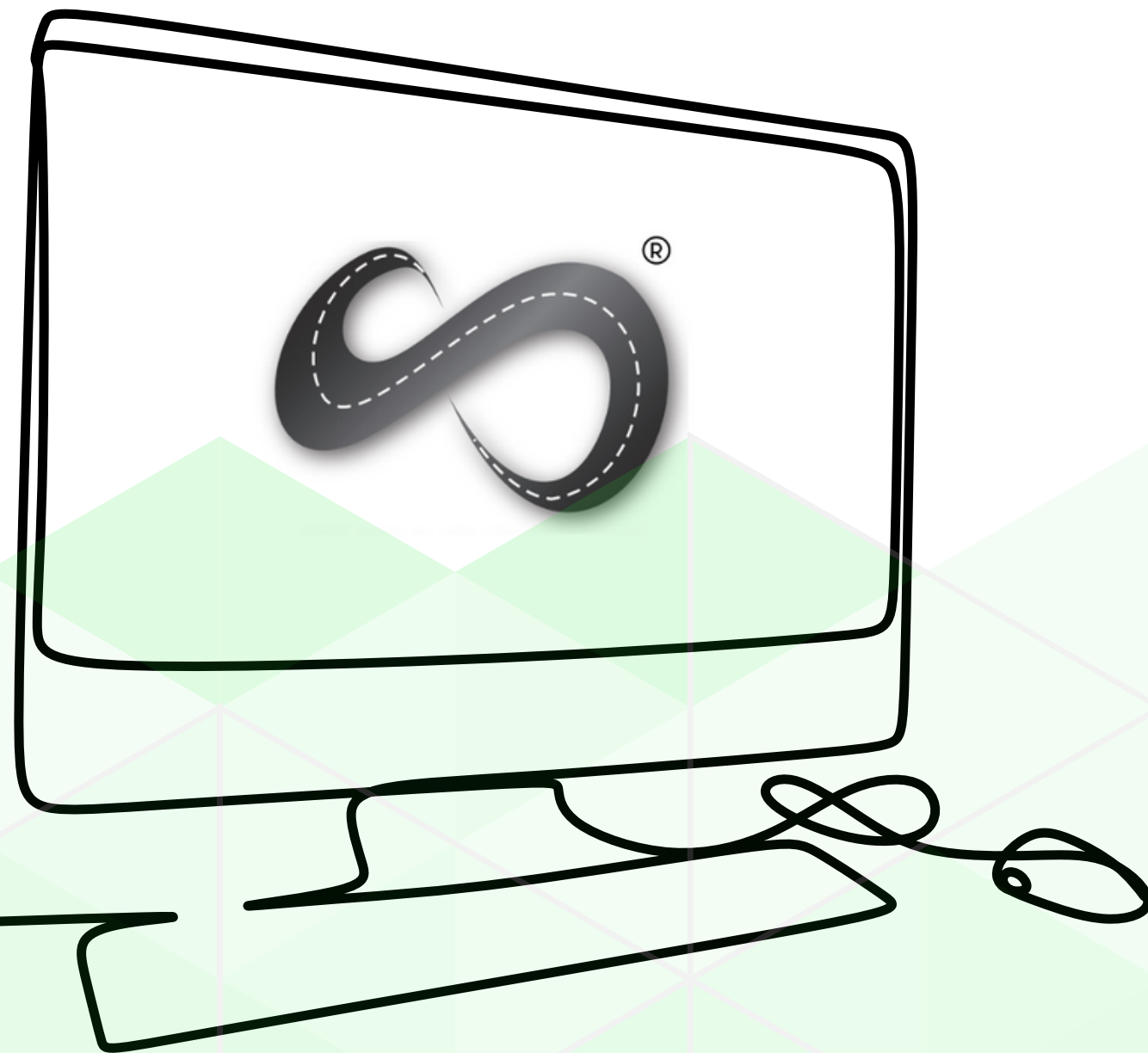
- Lumina Spark
- Lumina Select
- Lumina Sales
- Lumina Emotion
- Lumina Leader
- Lumina Team

Client Showcase



| | | | | | | | |
|--|--|--|--|--|--|--|--|
| | | | | | | | |
| | | | | | | | |
| | | | | | | | |
| | | | | | | | |
| | | | | | | | |
| | | | | | | | |
| | | | | | | | |
| | | | | | | | |
| | | | | | | | |

Contact Us



—

Corporate Queries - 7721023331 / 9766955000

Entrepreneurial Queries - 9730655000

—

www.skalent.co.in